

SPECIFICATION SHEET

Product Name: Cor a 14

Catalog # CA14-A37A

Product Description: Native *Corylus avellana* (Hazelnut) allergen.

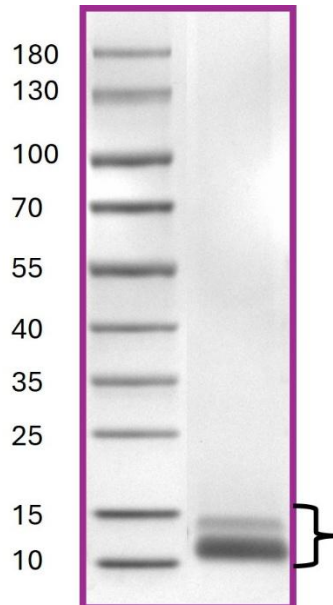
Storage and Stability: Store at -20°C. To avoid repeated handling and multiple freeze/thaw cycles aliquot diluted product into smaller quantities.

Data for a Sample Lot:

Alternate Names : 2S albumin
Source : *Corylus avellana* (Hazelnut)
Accession Numbers : Genbank: [FJ358504](https://www.ncbi.nlm.nih.gov/nuclot/FJ358504)
Host : Native protein
Formulation : Native protein stored in 30mM Tris-Cl, pH8.0 solution
Molecular weight : ~12 kDa

Purity : The purity was determined to be ≥90% by densitometry

Gel Image



References

1. Giannetti A., et al. Natural History of Hazelnut Allergy and Current Approach to Its Diagnosis and Treatment. *Children* 2023, 10, 585.
2. Eller E., et al. Cor a 14 is the superior serological marker for hazelnut allergy in children, independent of concomitant peanut allergy.